

Technical Advisory Committee (TAC)

Meeting #1 | December 4, 2019



Introductions

- IDOT Bureau of Planning
- IDOT Aeronautics
- Consultant team
 - Kimley-Horn
 - CMT
 - EDR Group
 - Hanson
 - Kaplan & Mello
- TAC Members
- Illinois Airports

Kimley»Horn



Agenda

- 1. Purpose and Role of the TAC**
- 2. Project Overview**
 - Illinois Aviation System Plan (IASP)
 - Economic Impact Analysis (EIA)
- 3. Project Goals, Performance Measures (PMs) and Performance Indicators (PIs)**
- 4. Current Trends and Issues**
- 5. Inventory**
- 6. Next Steps**

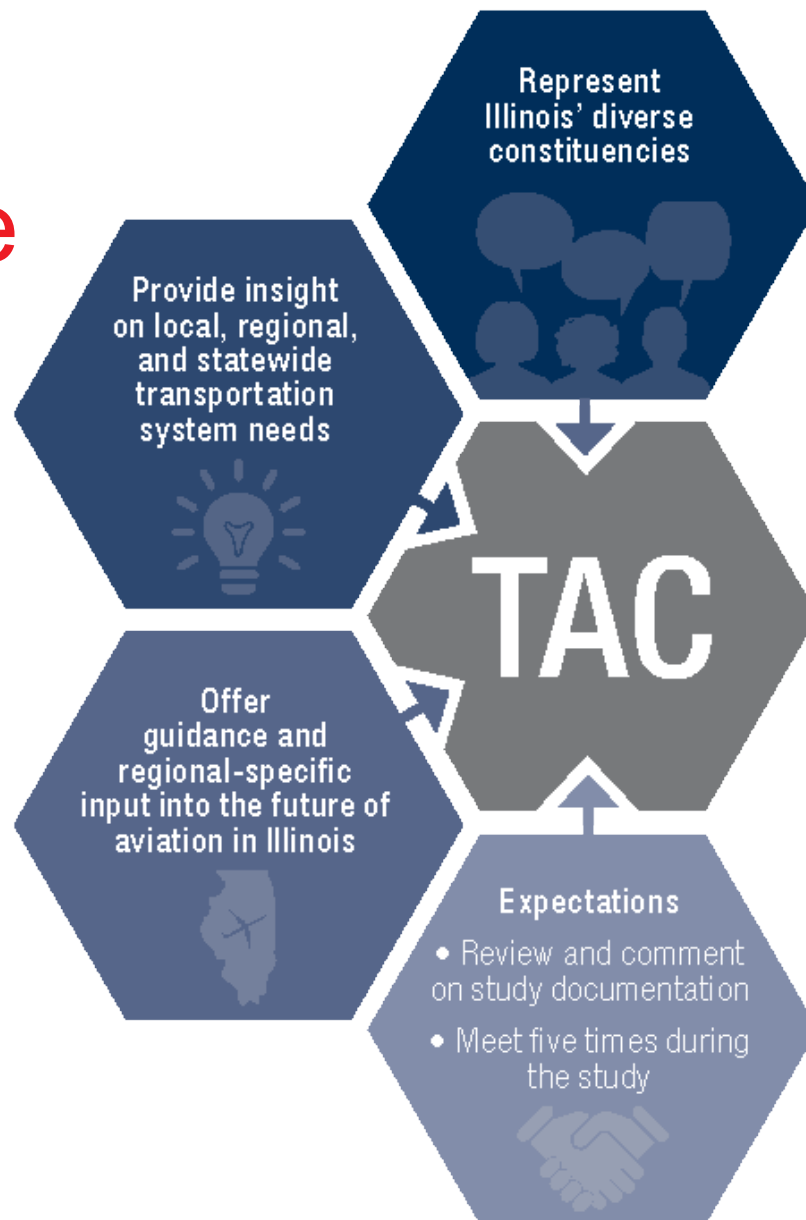




1 Purpose and Role of the TAC



Purpose and Role



Additional Study Input

- Project website: www.ILaviation.com
- Stakeholder interviews
- IDOT modal representatives
- Regional planning organizations
- State conferences





2 Project Overview

- **Illinois Aviation System Plan**
- **Economic Impact Analysis**

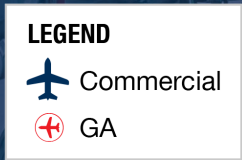






An aerial photograph of an airport tarmac, showing several commercial aircraft parked at gates. The image is overlaid with a semi-transparent blue filter. The text "Illinois System Airports" is prominently displayed in white, bold, sans-serif font across the center of the image.

Illinois System Airports



IASP Purpose

- Collectively assess the conditions and needs of the system of public-use, public-owned airports throughout the state
- Identify system's capability to meet current and future demand
- Serve as a blueprint for future development of the system over the planning period (20 years)

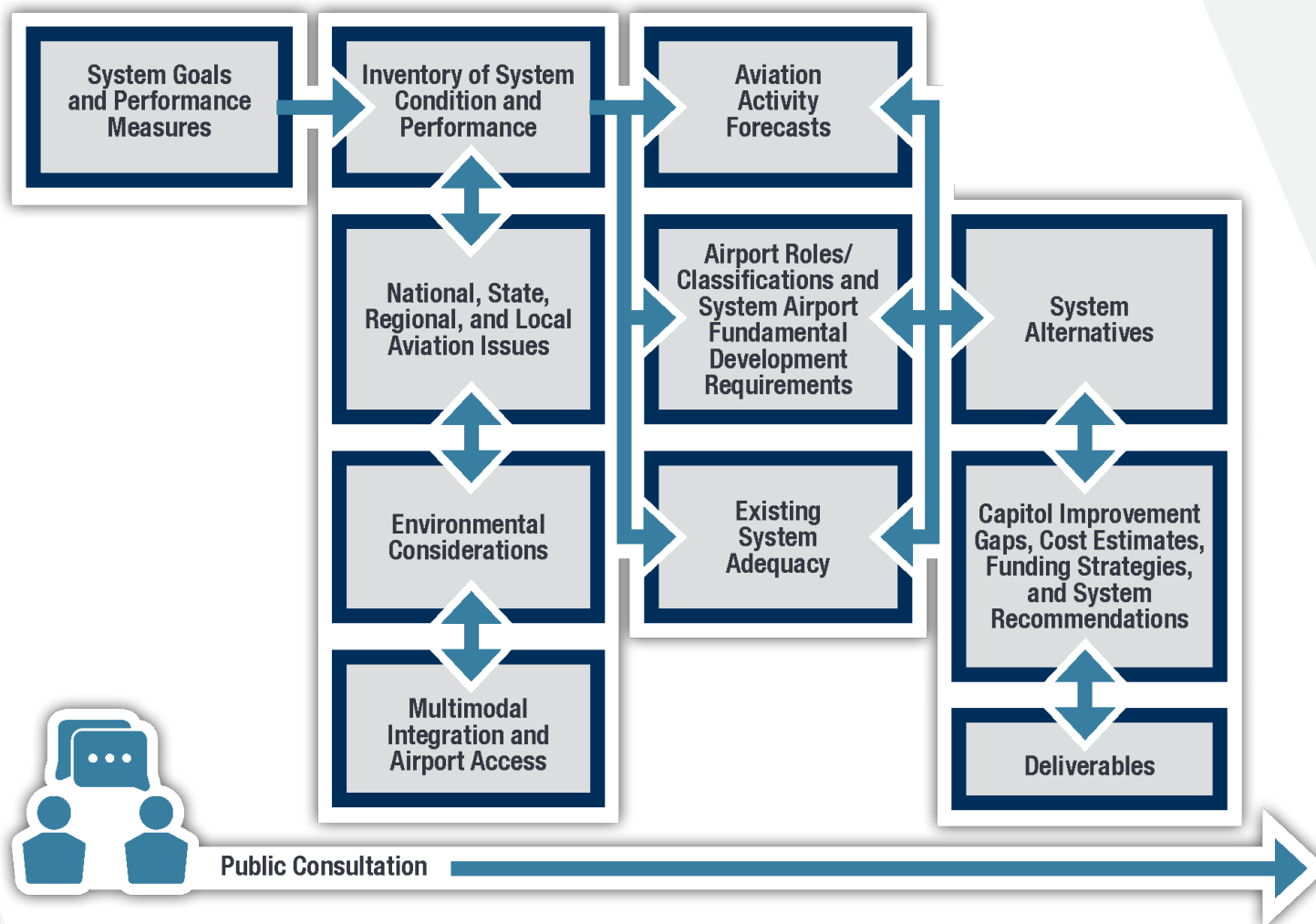


IASP is not...

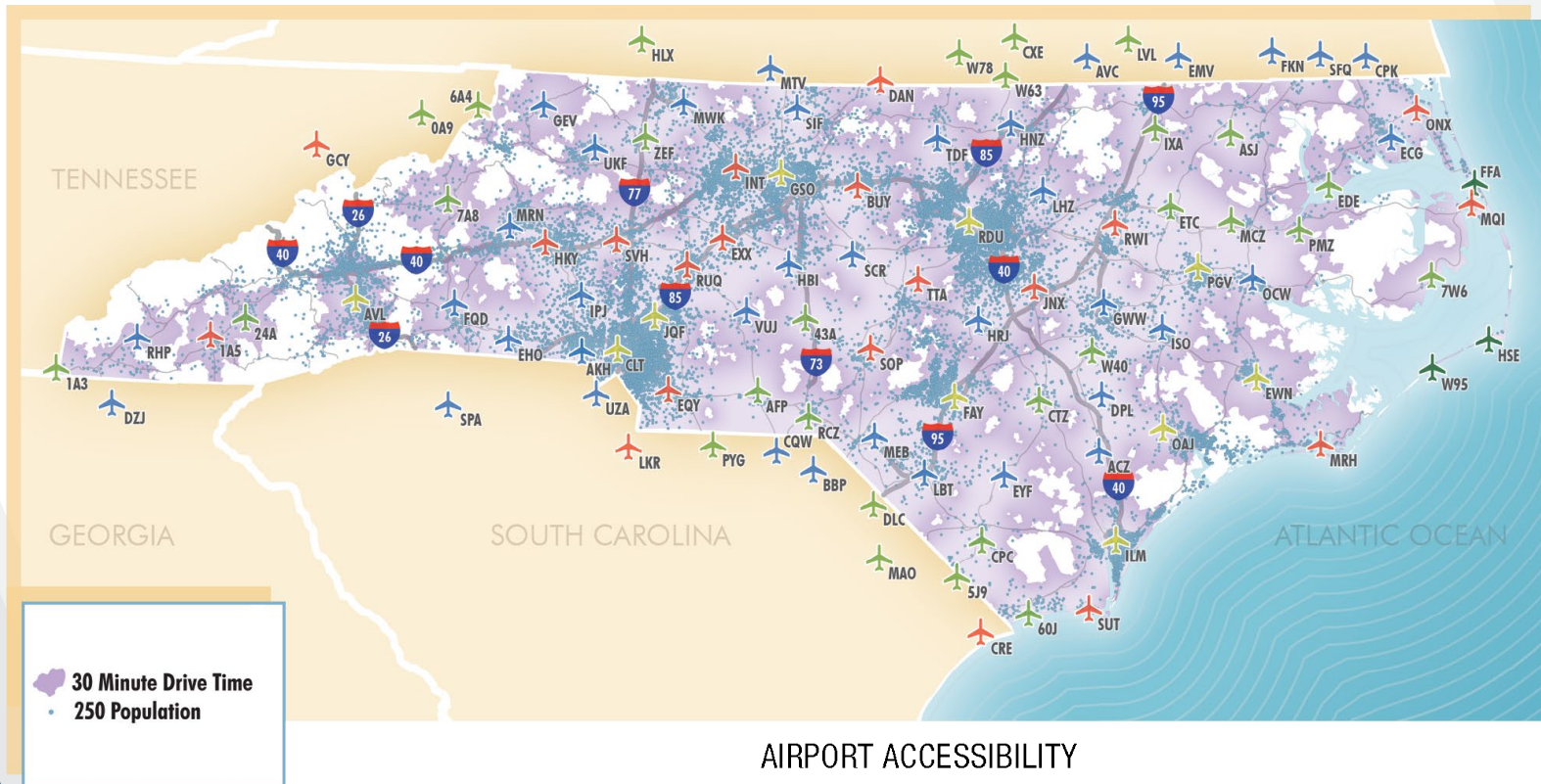
- A plan to replace individual airport CIPs or planning and design efforts
- Meant to instruct airports how to do business with IDOT
- A mandate that a project will be funded (recommendations only)



IASP Process



Sample Drivetime Analysis



EIA Purpose

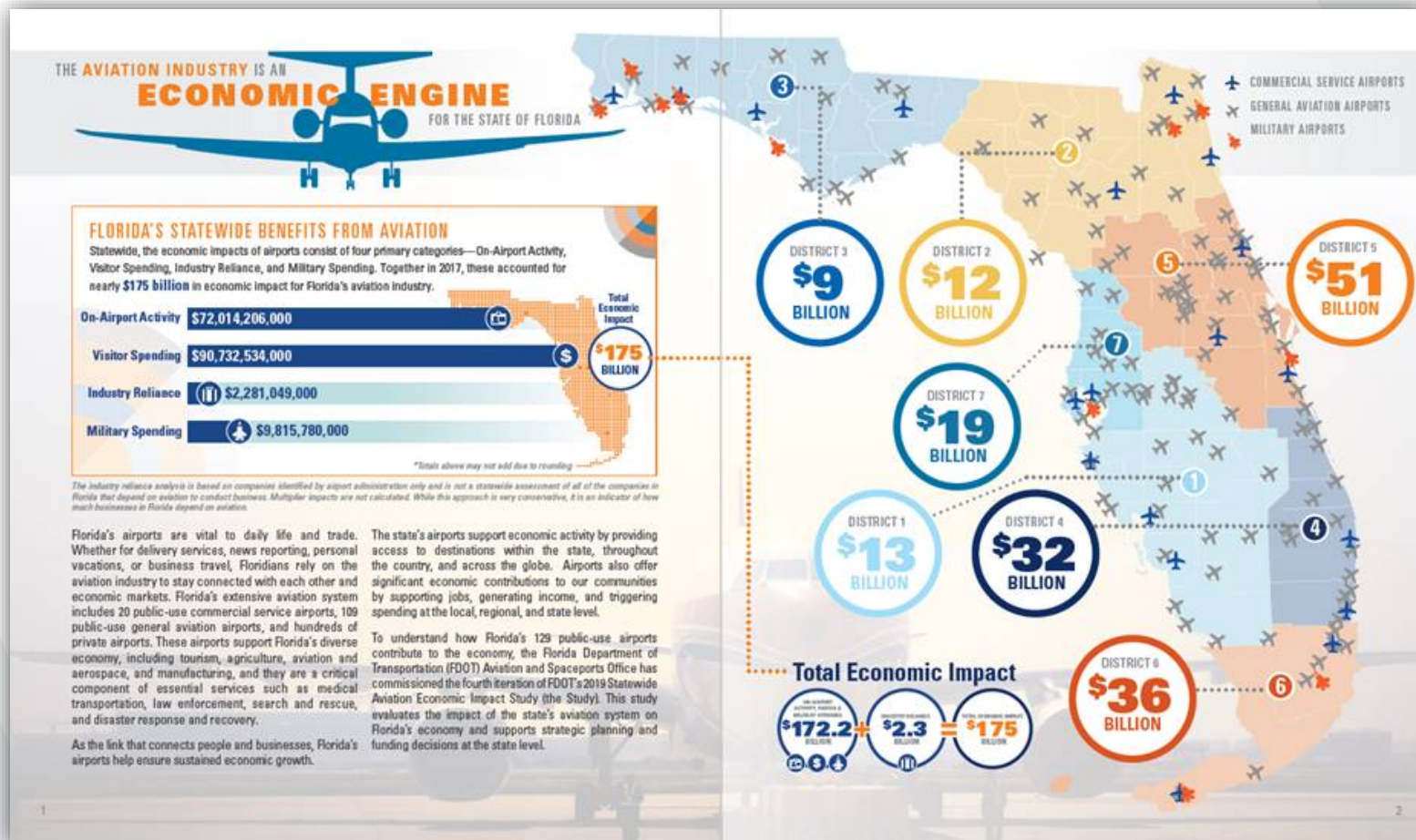
- Evaluate the on-airport and other spin-off or multiplier impacts of airports throughout Illinois
- Validate continued public investment in Illinois's airport system
- Quantitative Impact Calculation
 - What is the economic contribution of Illinois' airports?
 - What is the value of key aviation activities supported by Illinois' airports?
 - Agricultural activity
 - Freight and cargo
- Qualitative Impacts
 - Quality of life factors—tell the story of the aviation system's importance
 - Medical evacuation
 - Aerial firefighting, and more



EIA Process



Sample Deliverable





3 Project Goals, Performance Measures, and Performance Indicators



What Drives the IASP?



IASP Goals



Economy



Livability



Mobility



Resiliency



Stewardship





**Performance
Indicators**

Informational

**Performance
Measures**

Actionable



Sample Board



Economy



Improve Illinois' economy by providing transportation infrastructure that supports the efficient movement of people and goods.

Performance Measures

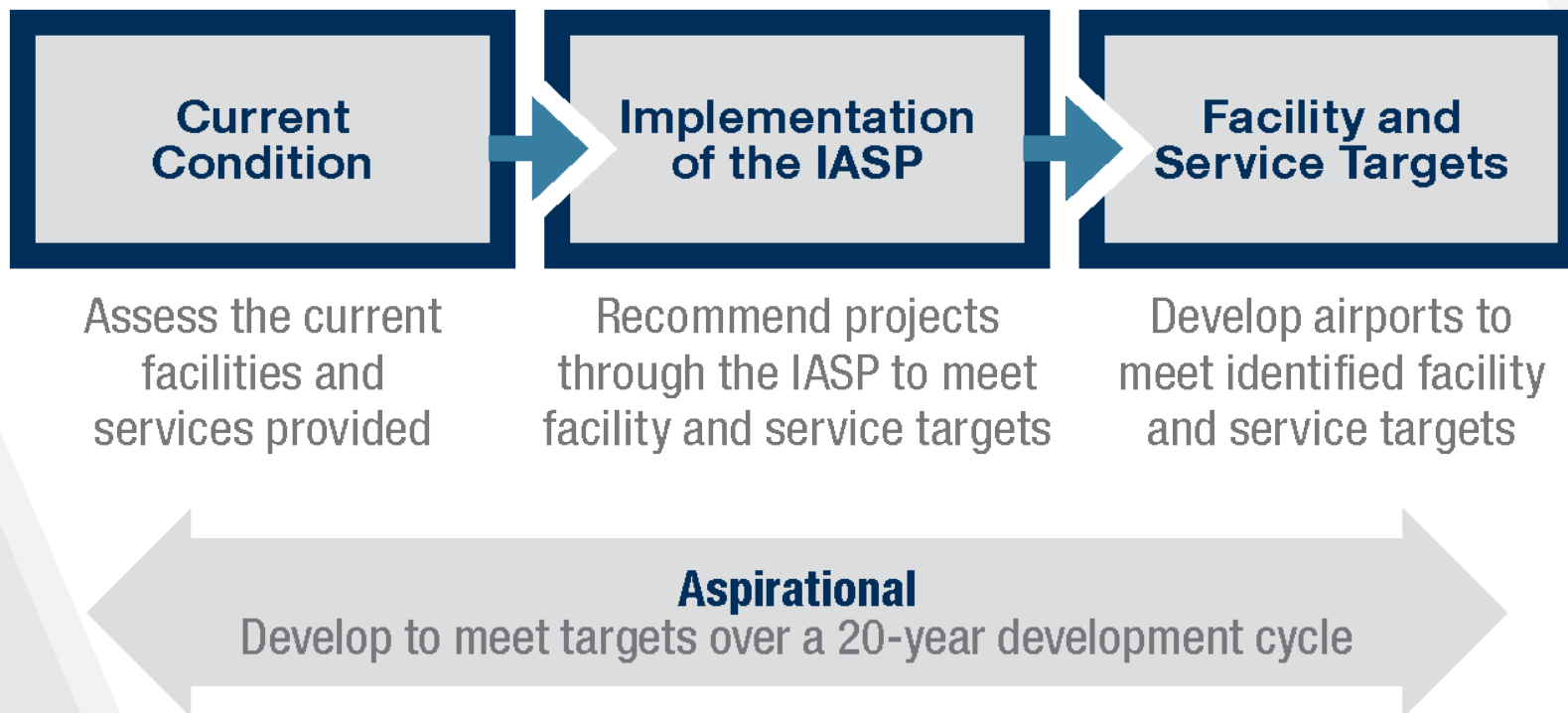
- Percent of airports that have completed a master plan/ALP in the last 10 years (2010)
- Percent of airports with primary runway approaches negatively impacted by obstructions
- Percent of airports meeting FAA taxiway geometry standards, including direct access taxiway fixes
- Percent of airports meeting FAA Runway Safety Area (RSA) standards
- Percent of population within a 30-minute drive of an airport with weather reporting capabilities

Performance Indicators

- Percent of airports with current airside farm plots
- Percent of airports with the potential for runway/extension projects – including land purchased – that need built (500+ aircraft operations that exceed design/ARC, crosswind runway, and length/width)
- Percent of airports providing flight training
- Percent of airports with aging facilities (terminal buildings, hangars, etc.) as defined by the FAA
- Percent of airports with Americans with Disabilities Act (ADA)-compliant terminal buildings
- Percent of airports experiencing aerial agricultural application operations
- Percent of airports experiencing air ambulance operations
- Percent of airports experiencing government operations (wildlife, prisons, military, survey, fish hatchery, etc.) or law enforcement operations

IASP SYSTEM GOALS, PERFORMANCE MEASURES, AND PERFORMANCE INDICATORS

Facility and Service Objectives



Sample Board

Facility and Service Objectives



Airfield Facilities	Landside Facilities	Airport Services	
<ul style="list-style-type: none"> • ARC • Primary Runway Length • Primary Runway Width • Primary Runway Surface • Primary Runway Strength • Taxiway • Runway Markings • Approach • Runway Visual Aids • Airport Visual Aids • Runway Lighting • Weather Reporting • Primary Runway PCI • Primary Airfield Pavement PCI (not including runway) • Wind Cone/Velocity Indicator • Taxiway Lighting • Apron Tie-Downs • Box Hangars • Shade Hangars • T-Hangars • Crosswind Runway • Secondary Runway 	<ul style="list-style-type: none"> • Terminal (GA) • Classroom/Conference Room • Administrative Facilities • Dedicated Maintenance/Snow Removal Equipment (SRE) Storage Building • Electric Vehicle Charging Stations • ATCT • Paved Entry Road • Segmented Circle Marker Where Non-standard Traffic is Used • Terminal Parking 	<ul style="list-style-type: none"> • 24-Hour Fuel • Jet A Fuel • AvGas Fuel • Fuel Sales • Aircraft De-icing • Courtesy Car • FBO • Air Taxi/Charter • Aircraft Rental • Aircraft Maintenance • Avionics Sales and Services • Oxygen • Snow Removal • Public Transportation 	<ul style="list-style-type: none"> • On-Site Rental Car • Internet Access • Phone Access • After-Hours Food and Beverage • 24-Hour (Sanitary) Restrooms • Pilot Area/Flight Planning Area • First-Aid Kit • Potable Water • Fire Protection • Access Control

IASP SYSTEM GOALS, PERFORMANCE MEASURES, AND PERFORMANCE INDICATORS



PM and PI Activity

Mission: Prioritize PMs



BREAK

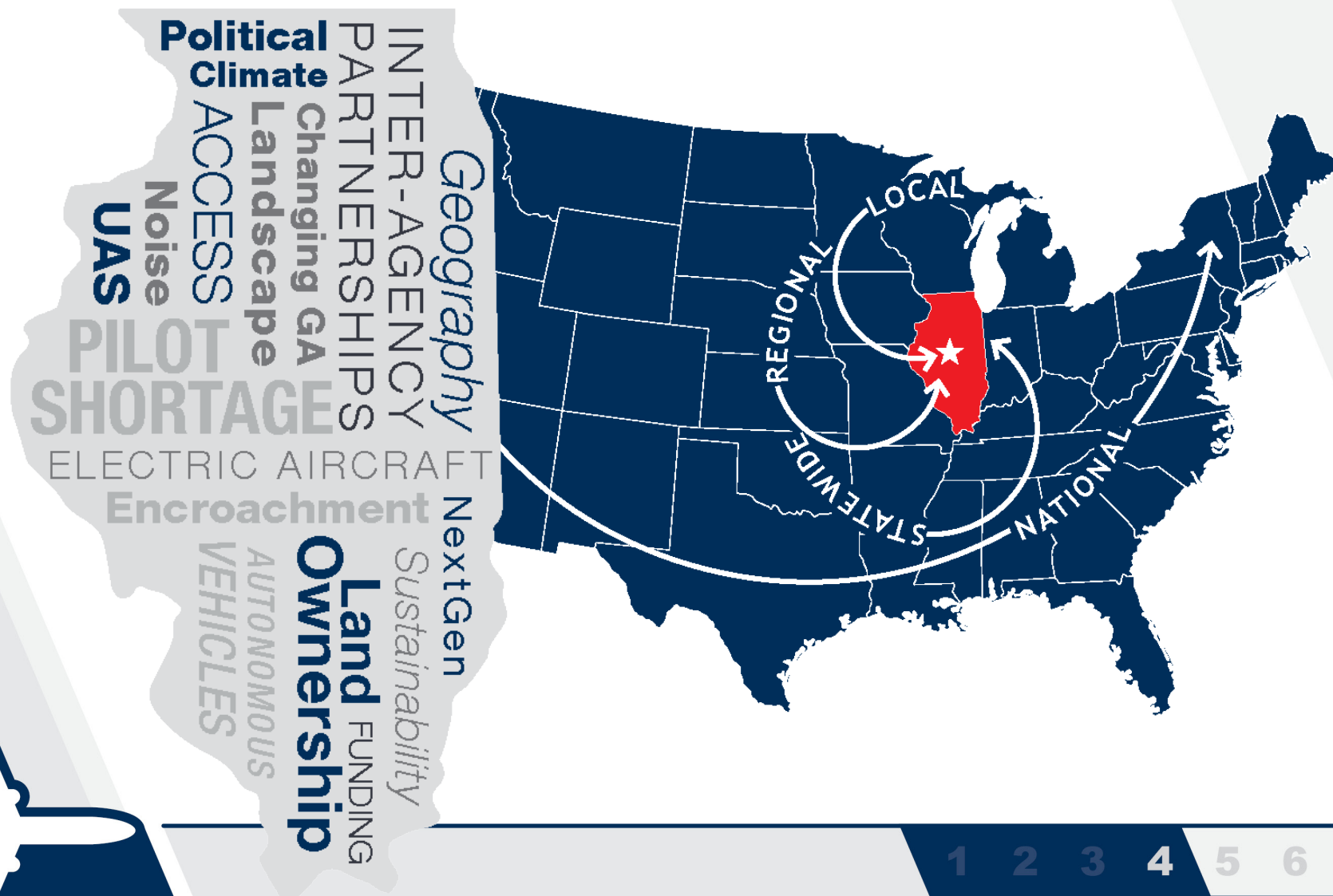




4 Current Trends & Issues



Trends Impact



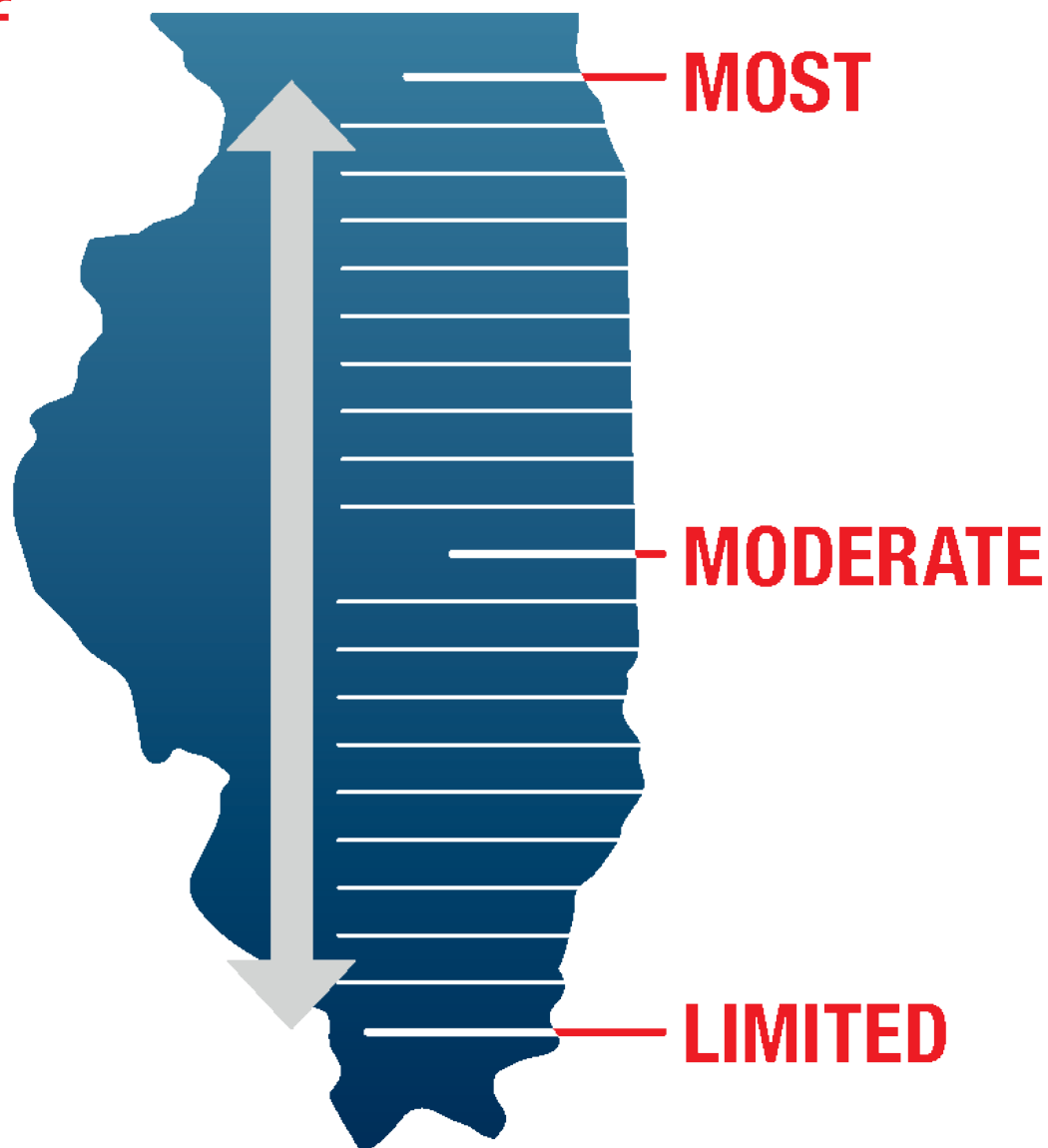
Issues & Trends

- What's impacting aviation in Illinois:
 - Now?
 - In a year?
 - In 5 years?
 - 10+ years?

_____ is impacting
aviation in Illinois.



Scope of Impact





5 Inventory



Process

- **Collect baseline data to:**
 - Benchmark current system facilities and services
 - Evaluate historical system progress
 - Conduct activity forecasts
 - Calculate updated system performance
 - Identify system needs



Inventory Includes...

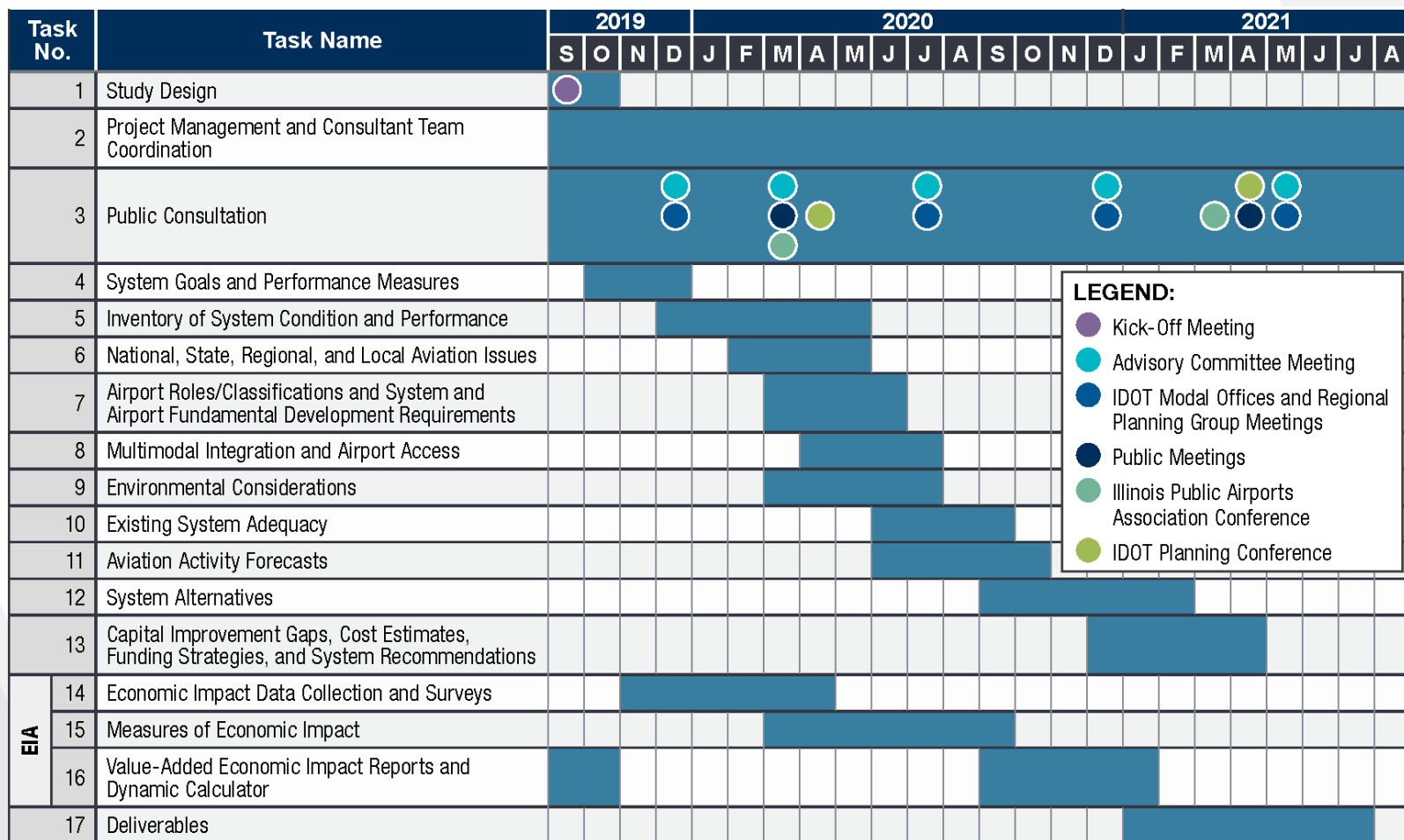
- Airside/landside facilities
- Airport services
- Airport activity
- Mobility and access
- Airport safety
- Airport planning
- Environmental and land use compatibility
- Economic impact



6 Next Steps



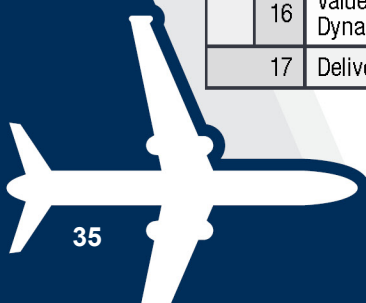
Schedule



LEGEND:

- Kick-Off Meeting
- Advisory Committee Meeting
- IDOT Modal Offices and Regional Planning Group Meetings
- Public Meetings
- Illinois Public Airports Association Conference
- IDOT Planning Conference

PROJECT COMPLETION



Our Next Steps

- Incorporate TAC feedback
- Finalize goals, performance measures, performance indicators
- Airport on-site visits
- EIA surveys



Questions?

Thank you for your participation!

Clayton Stambaugh, MPA
IDOT Bureau of Planning

P: 217.782.4981

E: Clayton.Stambaugh@Illinois.gov

Zach DeVeau, AICP
Kimley-Horn Project Manager

P: 850.553.3530

E: Zach.Deveau@kimley-horn.com

