

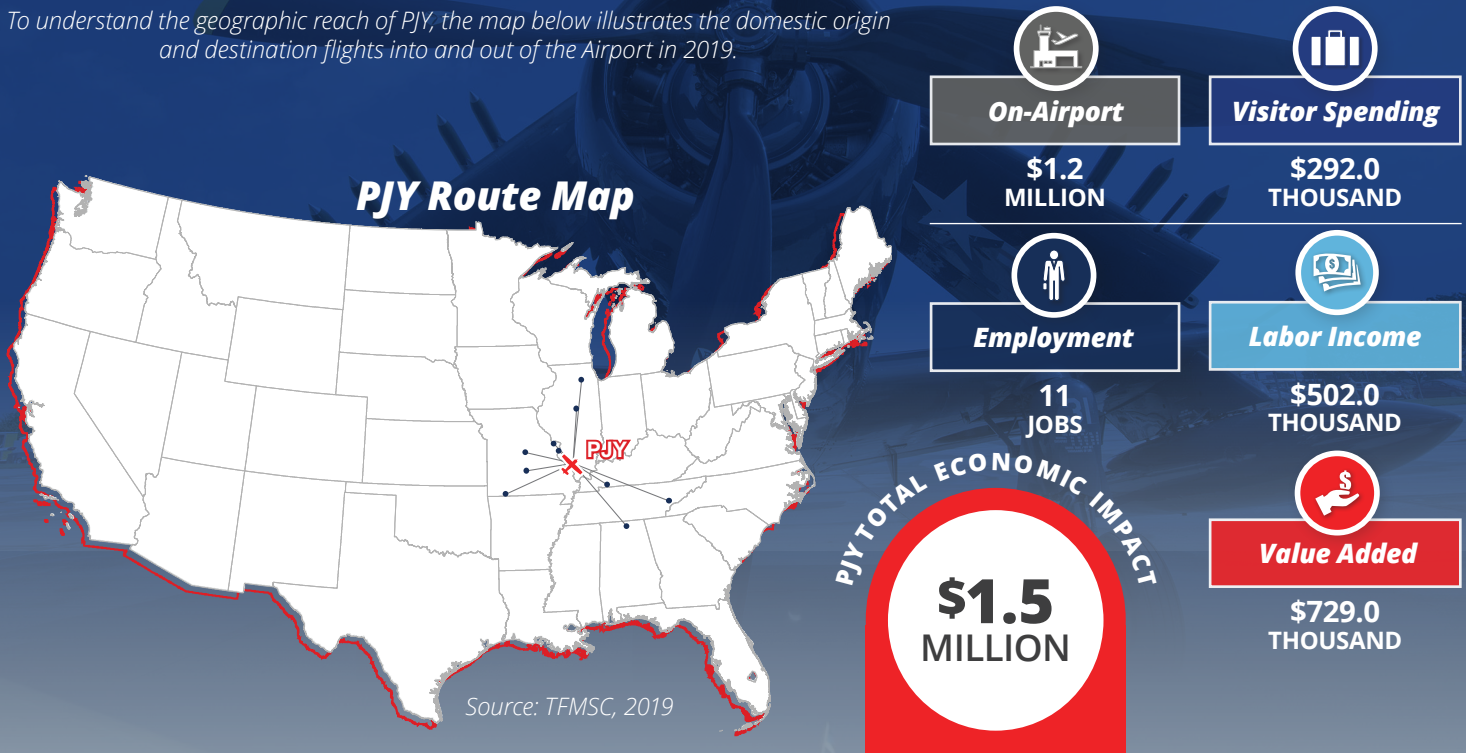


## PINCKNEYVILLE-DU QUOIN

### ABOUT THE AIRPORT

Pinckneyville-Du Quoin Airport (PJY) is a general aviation airport in southwest Illinois located in Perry County. C15 is situated approximately seven miles south of the City of Pinckneyville and approximately nine miles southwest of the City of Du Quoin. The Airport is jointly owned by the City of Pinckneyville and the City of Du Quoin. In addition to frequent recreational flying, the Airport also supports sight-seeing, corporate flying, glider flying, and aerial inspection. Farmers native to the area also use the Airport for agriculture operations. PJY actively supports the community through hosting fly-in events and by partnering with the local EAA chapter to participate in the Young Eagles program.

To understand the geographic reach of PJY, the map below illustrates the domestic origin and destination flights into and out of the Airport in 2019.



## WHAT IS ECONOMIC IMPACT?



### On-Airport Activity

The impacts generated by airports including airport management and administration, airport tenants, as well as on-airport construction.



### Labor Income

Also known as "payroll"; total employment compensation, including wages and other benefits (e.g., healthcare insurance payments, retirement).



### Visitor Spending

The impacts generated by out-of-state visitors to Illinois, for personal or business reasons, who spend money on accommodations, food and beverage, local ground transportation, retail, and entertainment.



### Air Cargo

Economic contributions from industries in Illinois that receive or ship air cargo through Illinois airport. Air Cargo impacts are quantified at the District and Statewide levels only.



### Employment

Number of people employed, including part-time and full-time.



### Value Added

The economic productivity of each aviation-related business establishment, calculated as business revenue earned minus the cost of purchasing goods and services from other businesses. It includes all labor compensation, profits, and business taxes paid.

# REGION 5

## ■ IDOT Districts 8 & 9

Region 5 is situated in beautiful southern Illinois and borders Missouri, Kentucky, and Indiana. Region 5 is known for its tourist destinations, which include Shawnee National Forest, Giant City State Park, Garden of the Gods Recreation Area, and the St. Louis metropolitan area. Visitors to the Region are welcomed through its two commercial service airports, Veterans Airport of Southern Illinois (MWA) and MidAmerica St. Louis Airport (BLV), and 14 general aviation airports. In addition to supporting significant military activity due to its shared airfield with Scott Air Force Base, MidAmerica St. Louis Airport (BLV) is one of the fastest growing commercial service airports in the state. Airports in Region 5 generated 38,278 jobs, \$2.6 billion in labor income, \$3.4 billion in value added, and \$6.1 billion in total economic impact.



**On-Airport**  
\$4.1 BILLION



**Visitor Spending**  
\$214.8 MILLION



**Employment**  
38,278 JOBS



**Air Cargo**  
\$1.8 BILLION

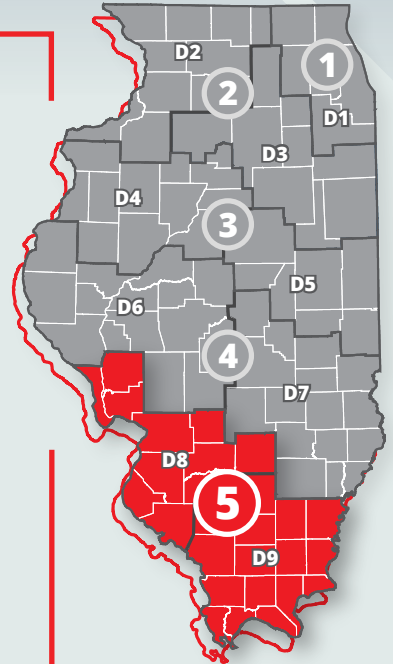


**Labor Income**  
\$2.6 BILLION



**Value Added**  
\$3.4 BILLION

REGION 5 TOTAL ECONOMIC IMPACT  
**\$6.1  
BILLION**



# STATEWIDE

Illinois boasts a robust aviation system of over 80 airports, including some of the busiest facilities on the globe. To support this robust system, the Illinois Department of Transportation (IDOT) initiated the development of the Illinois Aviation Economic Impact Analysis (EIA) to quantify each airport's annual monetary contribution to their local, regional, and statewide economies. The EIA determined that Illinois' airports generated 492,768 jobs and contributed \$95.5 billion to the state's economy in 2019.



**On-Airport**  
\$38.4 BILLION



**Visitor Spending**  
\$21.2 BILLION



**Employment**  
492,768 JOBS



**Air Cargo**  
\$35.9 BILLION



**Labor Income**  
\$32.6 BILLION



**Value Added**  
\$53.8 BILLION

STATEWIDE TOTAL ECONOMIC IMPACT  
**\$95.5  
BILLION**

